



### Oil and Gas Advanced Containment Solutions | Premium Coated Woven Polyethylene (CWPE) and Linear Low-Density Polyethylene (LLDPE)



**Drilling and Completion Pads**

Coated Woven Polyethylene (CWPE) is a perfect material for your pad liner applications. Extremely durable with high puncture strengths that will withstand direct traffic. Protect the entire pad with large single piece fabricated CWPE panels requiring limited to no field seaming.



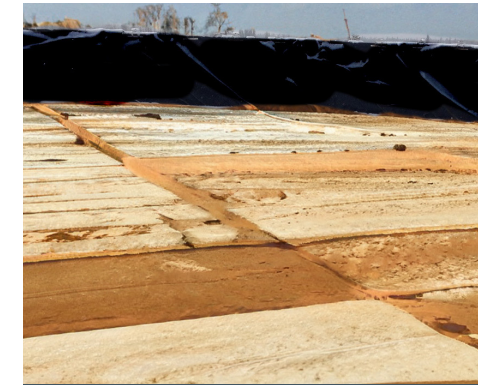
**Tank Liners (AST)**

ITL offers one piece stepped liners for potable or freshwater storage. Oil and Gas applications include the storage of brine and specialty liners for oil and condensate. Custom covers for Above Ground Storage are also available.



**Mud Pit Liners**

We can fabricate any liner for your mud pit application. Inland Tarp & Liner can fabricate extremely large custom single piece panels, so field welding is not required. This includes mud pits and pad liners.



**Evaporation Covers**

Evaporation covers reduce evaporation or contamination with a single piece cover for ponds or tanks. ITL floating covers provide an economical means to further protect valuable temporary storage.



**Bull Flex™ and Performer™**



**Athletic Covering**

### Outdoor Asset Protection Solutions | Ag & Athletic Field Covering

Our flagship product, with nearly forty years of testing, development, and field use. We're proud to be the home of the Bull Flex™ and Performer™ tarping systems.

We also offer standard and custom sized side curtains, underlayment, and tie-down kits. By using high quality components in the tarps, we have achieved superior hay tarps unmatched in the marketplace.

ITL Athletic coverings are made to withstand the elements and protect your valuable field prep.

From full field covers and individual base covering to our newest product: Ultimate Defender Pitching Mound cover, you can expect premium quality that is built to last.

## The ITL™ Advantage

**Warrantied Factory Seams**

**Customized Panels**-ability to fabricate larger sizes & weights of geosynthetic materials

**Optimal Site Design**-CAD drawings

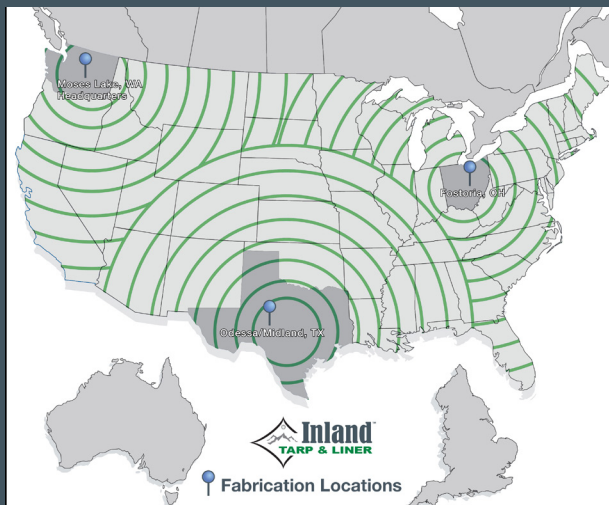
**Wide Array of Materials**

**Robust, Well-Documented QAQC Processes Across All Locations**

**Overall Reduced Labor Costs**

**Increased Installation Efficiencies**

**Personal Focus On Customer and Project Needs**



**United States Fabrication and Distribution Centers**  
Moses Lake, WA | Odessa, TX | Fostoria, OH



[www.inlandtarp.com](http://www.inlandtarp.com)



## Introducing ITL RCR®



### Meet ITL Reinforced Concrete Roll®

NEW IN 2019: ITL Reinforced Concrete Roll® or, ITL RCR®, is an advanced cement composite solution that can be easily and quickly deployed. Rolled out and hydrated with water, it takes shape into a durable structure suitable for irrigation canals, ponds/containment wells, or channel and bank lining.

Installations are completed efficiently with no rebar, cement trucks or specialized training. Available in rolls of 5m x 20m, (~16'4" x ~65'7"), ITL Reinforced Concrete Roll® can be installed in dry weather, rain, under water, and without traditional heavy cement trucks, mixing, or rebar.

**Learn more at [www.itlRCR.com](http://www.itlRCR.com)**



**PREMIUM QUALITY. BUILT TO LAST.**

OVER 40 YEARS OF PROVIDING QUALITY PRODUCTS.