



CULVERT BEFORE



RCR-7® INSTALL



RCR-7® HYDRATION

ITL RCR-7® | CULVERT REPAIR SOLUTION—HOUSTON, TX

PROJECT OVERVIEW

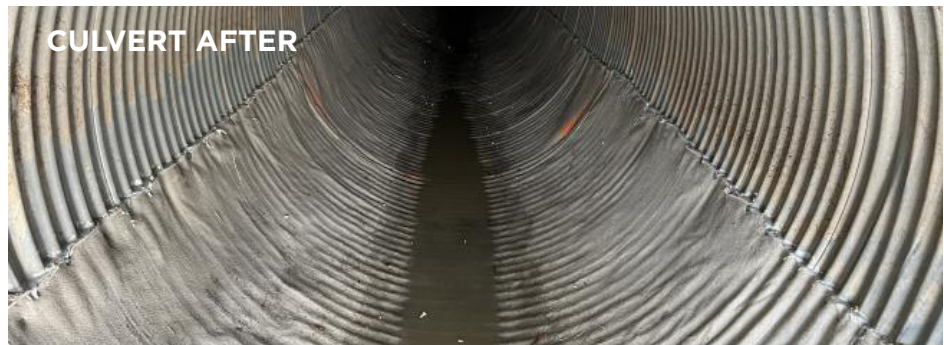
Stuckey's, LLC chose to utilize ITL RCR-7® for their latest culvert repair. The alternatives: traditional concrete, pipe replacement or composite lining, were ruled out in favor of Reinforced Concrete Roll® as a less disruptive and time consuming solution.

PROJECT GOAL

Rehabilitate culvert pipe with a time and cost effective solution for better culvert performance exiting into high-flow channels.

RCR® AS A SOLUTION TO

- Save time and labor costs.
- Limit disruption and loss of access for extended time period.
- Long term and repeated repair cost.
- Extend lifespan of pipe without replacement.



CULVERT AFTER

CULVERT REPAIR

Total application: 75' long 8' wide covering bottom and sides of the 72" pipe up to the waterline. The contractor cut 8'x16' strips at their shop prior to the installation and transported them to the project site. Pre-cutting the RCR® material made it easy to maneuver pieces in and out of the culvert without heavy equipment. The RCR-7® was then secured using Sikaflex, 1" self-tapping screws, and an aluminum baton strips at the termination and beginning of box culvert.

Summary: Stuckey's, LLC was extremely pleased with customer service provided by Inland Tarp & Liner along with clear and concise information on how to install the product. This product was able to be installed faster than originally anticipated which yielded savings to the end client without decreasing effectiveness of the application. Ease of maneuverability in tight spaces due to precutting aided to the speed of installation. For this application, a five-person crew was utilized and ITL personnel along with management from Stuckey's were on site to provide product support and ensure all applicators properly understood the means and methods being utilized.



Visit Us Online

www.itlRCR.com | 800-346-7744

